

Light rail southern Gold Coast

Have your say on the light rail extension

It's time to have your say on the future extension of light rail across our city.

Visit gchaveyoursay.com.au/lightrailsouthernqc

CITY OF
GOLDCOAST.



Light rail southern Gold Coast

The Gold Coast light rail project is one of the biggest public transport projects in the country, and the biggest transport infrastructure project ever undertaken on the Gold Coast.

Light rail today

As Queensland's first ever light rail system, it represents a major step forward in transforming the city into a modern, accessible destination.

Stage 1 of the project was delivered as a public-private partnership between the Queensland Government, City of Gold Coast (City), the Federal Government of Australia and GoldLinQ, with the City providing a financial contribution of \$120 million.

The light rail (G:link) commenced on 20 July 2014 with fast, frequent trams connecting 16 light rail stations along a 13 kilometre route from Broadbeach to Gold Coast University Hospital.

In its first year of operation, 7 million people used the G:link to get around the city. This exceeded all expectations.

Stage 2 to Helensvale – approved

In September 2015, City of Gold Coast committed \$55 million of funding towards Stage 2 of the light rail which would connect the Gold Coast University Hospital with the heavy rail station at Helensvale.

A few weeks later, Prime Minister Malcolm Turnbull and Premier Anastacia Palaszczuk joined me confirming a \$95 million Federal contribution to Stage 2.

The funding boost from the Federal Government has allowed the State Government to progress Stage 2 of the light rail to Helensvale, with construction commencing in April 2016 and operational by the Gold Coast 2018 Commonwealth Games™.

This extension will enable Gold Coast residents to commute to Logan and Brisbane City and Brisbane International Airport. It also opens up the Gold Coast to domestic and international inbound visitors, trade and economic growth.

Benefits of extending the light rail

As a continuation of the public consultation and development of the *Gold Coast City Transport Strategy 2031*, I am seeking your feedback on route options developing the light rail west and south towards the Gold Coast Airport and major suburban centres.

Your feedback will be considered along with engineering route design studies and cost estimates to narrow potential routes for further stages of the light rail.

Extending the light rail will make it easier to get around the city, reduce congestion on the roads and improve commute times.

By connecting key centres such as the CBD with major shopping centres, residential areas, workplaces and the airport, we will see continued economic growth, jobs and opportunities.

With connections to heavy rail, Brisbane International Airport and the Gold Coast Airport, it will enable inbound tourists to reach our tourist centres quickly and efficiently and reinforce our position as Australia's premier tourist destination.

With this extension of the city's public transport network, there will be easy connections between residents and the things we love to do in the city. We will improve access to beaches, parks, dining and entertainment.

World-class sporting and cultural events can be staged in more areas around the city with crowds moving to and from more efficiently.

I encourage all Gold Coasters to read this brochure and go to gchaveyoursay.com.au/lightrailssouthernGC to have your say about options for the light rail southern Gold Coast.

Tom Tate

TOM TATE
MAYOR





Proposed options are indicative only and do not represent any established plans.



The sights and sounds of Miami Marketta



Beautiful Burleigh



Nobby Beach and Miami, just a short stop away

Idea 1 – Broadbeach to Burleigh Heads

Approximate distance: 6.5km

Idea 1 route would continue the current north-south route along the Gold Coast Highway towards Burleigh Heads where a new terminus would be located.

The extended route would directly service the suburbs of Mermaid Beach, Nobby Beach, Miami, North Burleigh and Burleigh Heads. It would also connect with buses at various locations with east-west connections including Robina and Varsity Lakes.

Along the route, it would take in popular entertainment precincts such as restaurants along Mermaid, Miami and Nobby Beach, a number of popular surf clubs on the beachfront and the dining areas of James Street and Goodwin Terrace. It would also connect with popular street markets such as Miami Marketta.

This route would service the shopping precincts of Alfred Street, Nobby Beach, Miami and Burleigh Heads.

It would also provide access to major supermarket chains of Coles and Aldi, farmers markets at Burleigh and Miami, coffee shops, Volunteering Gold Coast and Miami High School.

It would also service significant recreation locations including the Australian Institute of Sport, Miami Aquatic Centre, tennis courts, Burleigh Bears Leagues Club, Burleigh Bombers AFL Club, skate parks and public open space on the ocean front.

In terms of employment, this extension would improve access to the light industrial areas around Burleigh, Mermaid Beach and Miami.



Proposed options are indicative only and do not represent any established plans.

Idea 2 – Nobby Beach to Robina Town Centre and Stadium

Approximate distance: 9km

Idea 2 route has options for an east-west connection with Bond University, residential areas, shopping and sporting precincts and Robina train station.

The initial section services the sporting and community facilities of Burleigh Bears and Pizzey Park and Miami State School and onto Bond University.

The options split at this stage with Option A taking a direct northern route past Robina. Option B takes in Bond University, Varsity Lakes, Easy T Centre and Robina Parkway.

Both options take in Robina Town Centre, the hospital, Robina Stadium and terminate at Robina train station with onward connections to Brisbane.

The extended track would directly service the suburbs of Miami, Varsity Lakes, Mermaid Waters and Robina.

Along the route, this east-west option would take in shopping and entertainment precincts such as Wonderland Shopping Centre, Varsity Lakes dining and shops, and The Colonial, The Glades and Robina Woods golf courses.

This route would service events being held at the Robina Stadium and Titans home games. It would also support Robina's community hub, community centre and library.

This extension would improve access to the business precincts in and around Robina and provide a link between residential areas, the coastal strip and Southport CBD. It would also provide easy access for inbound tourists from the north who choose to travel down to the coast by train.



Connections to major shopping and business centres, Robina Town Centre



Proposed options are indicative only and do not represent any established plans.

Idea 3 – Burleigh Heads to Varsity Lakes train station

Approximate distance: 6.5km

Idea 3 route would extend an east-west connection from Burleigh Heads to Varsity Lakes train station.

The extended route would go inland from Burleigh Heads near Stocklands Shopping Centre, the light industrial areas of West Burleigh, Marymount College, Treetops Plaza and Scottsdale Drive.

It would directly service the suburbs of Burleigh Heads, West Burleigh, Burleigh Waters and Varsity Lakes with further heavy rail connections to the northern suburbs including Nerang, Helensvale and further up the line towards Brisbane.

This route would service inbound tourists wanting to travel to the Gold Coast by train. It would reduce congestion and parking along the coastal strip and create significant economic opportunities.

The route passes through light industrial areas providing a better way of commuting to work for many workers.



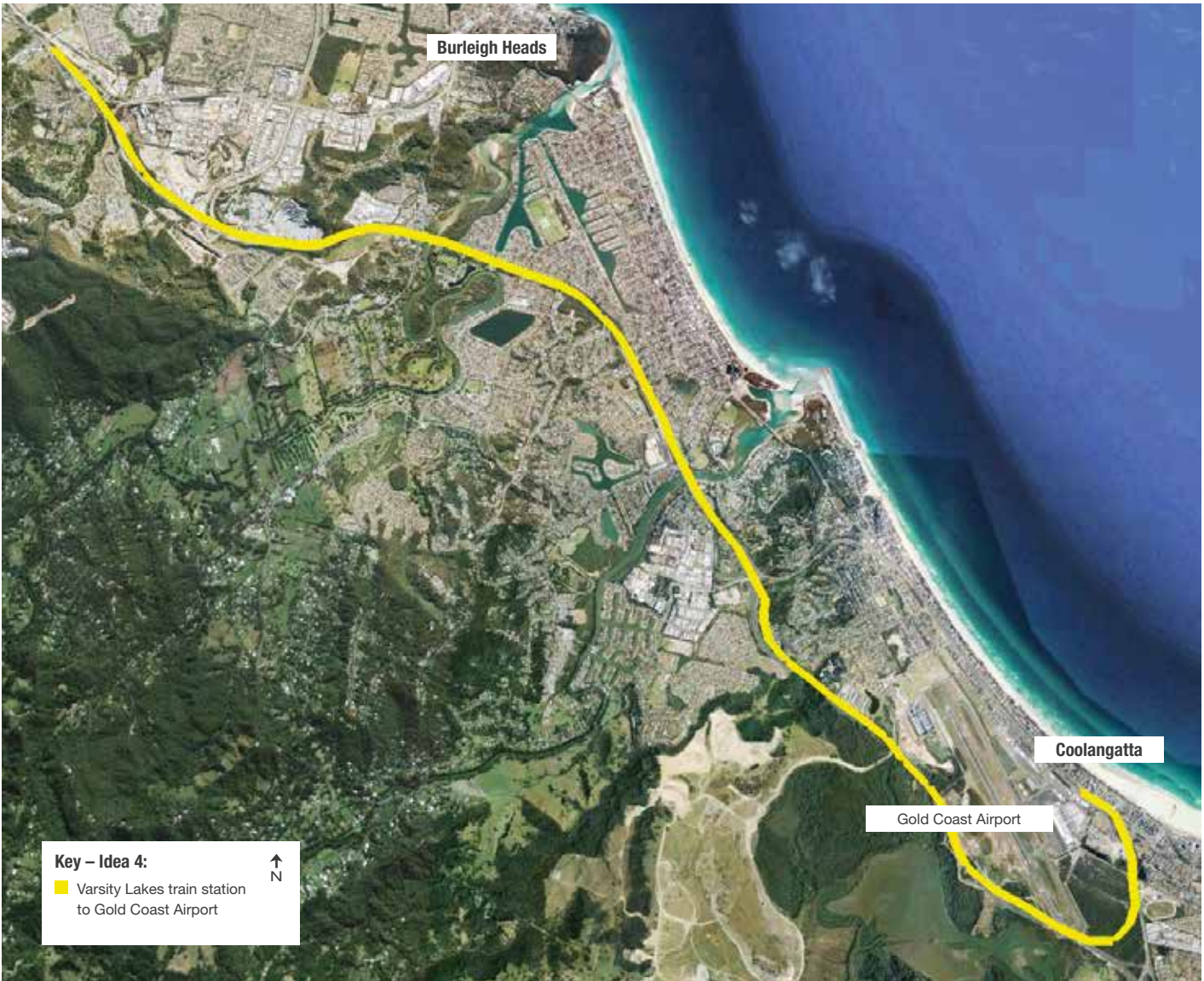
Improved access to popular shopping areas



Connecting north and south, the view north from North Burleigh



Joining in at community events, Varsity Lakes



Proposed options are indicative only and do not represent any established plans.

Idea 4 – Varsity Lakes train station to Gold Coast Airport

Approximate distance: 22km

Idea 4 route would follow the M1 corridor south from Varsity Lakes train station to Gold Coast Airport, where a new terminus would be located.

The extended route would service the suburbs of Varsity Lakes, Elanora, Tallebudgera, Currumbin and Bilinga.

This option would effectively deliver a light and heavy rail connection to both the Gold Coast and Brisbane airports providing a massive boost to our tourism industry and jobs.

Along the route, it would take in popular entertainment precincts and residential suburbs of Currumbin, Palm Beach and Tugun.

In terms of employment, this extension would improve the city's access to the light industrial areas and transport logistic hubs around the Gold Coast Airport and Currumbin.

Most notably, it would provide a link for inbound and outbound tourists accessing and departing Gold Coast Airport for the tourist centres along the entire coastline. It would cement our

City's role as Australia's premier tourist destination and encourage our export sector to further domestic and international destinations while creating a seamless link from the south to north of the city.



Iconic locations and iconic events opened up to a wider audience. Quicksilver Pro, Snapper Rocks



Proposed options are indicative only and do not represent any established plans.

Idea 5 – Burleigh Heads to Gold Coast Airport

Approximate distance: 14km

Idea 5 route would continue the current north-south route along the Gold Coast Highway connecting Burleigh and Gold Coast Airport.

The extended track from Burleigh to the airport would directly service the suburbs of Tallebudgera, Palm Beach, Currumbin, Tugun and Bilinga, with further bus links to North Kirra, Kirra and Coolangatta.

It would also enable southerly connections by bus to Tweed, Kingscliff and Northern NSW tourist areas opening up the city to business from the south.

Along the route, it would take in popular entertainment precincts along Palm Beach, Tugun and Currumbin.

It would also provide easy access to the popular Coolangatta beachfront markets and major events such as Cools Rocks On.

It would link all the universities – Southern Cross University, Bond University and Griffith University to the north.

It would provide easy access to tourism and resort locations including Rainbow Bay, Greenmount and Kirra.

In terms of employment, this extension would improve access to the light industrial areas around Currumbin and the airport. Most notably, it would provide a link for inbound and outbound visitors accessing and departing the airport for the tourist centres along the entire coastline.

Two options are being tabled with option A following the Gold Coast Highway through Tugun continuing south and Option B branching west at Tugun continuing south along the M1 corridor.



For more information

W gchaveyoursay.com.au/lightrailsoutherngc

CITY OF
GOLDCOAST.